



AT-AM4-3436-15X

Active Multiplier x4, 34-36GHz Pout=+15dBm

Active Frequency Multiplier, X4, 34-36GHz



Description:

AT-AM4-3436-15X is a broadband frequency multiplier. The multiplier has an input frequency of 8.5-9 GHz with a typical output +15dBm from 34-36GHz.

The integrated input and output buffers deliver high output power at a low drive level. The multiplier also has a typical harmonic suppression. The input port is SMA female, and the output is 2.92mm Male. Other port configurations are available under different requirement.

More information, visit: www.atmicrowave.com

Feature

- ✓ Frequency: 34-36GHz
- ✓ Pout: +15dBm typical
- ✓ Input: 8.5-9GHz
- ✓ Low Harmonics

Application

- ✓ 5G Communication
- ✓ Test Equipment
- ✓ ROF (RF Over Fiber)
- ✓ Radar System

Electronical Specifications:

Parameter	Min	Typical	Max
Input Frequency	8.5GHz		9GHz
Input Power	+1	+3dBm	+6
Multiplier Factor		X4	
Output Frequency	34GHz		36GHz
Output Power	+13dBm	+15dBm	
Drain Voltage		+5V	+8V
Current		150mA	
Spec Temp		25C	





AT-AM4-3436-15X

Active Multiplier x4, 34-36GHz Pout=+15dBm

Mechanical Information

Item	Description
Input Port	SMA Female
Output Port	2.92mm Male
Case Material	Copper
Finish	Gold Plated
Weight (Without Heatsink)	80g
Size:	30x30x14mm

Absolute Maximum Ratings Table

Parameter	Value
Drain Supply	+13V
RF Input Power	+10dBm
Operating Temperature	-20 to +70C
Storage Temperature	-65 to +150C

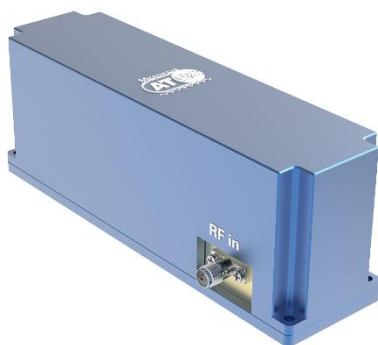
Note: -40 to 85C operating Temp range is available according to request.

Notes:

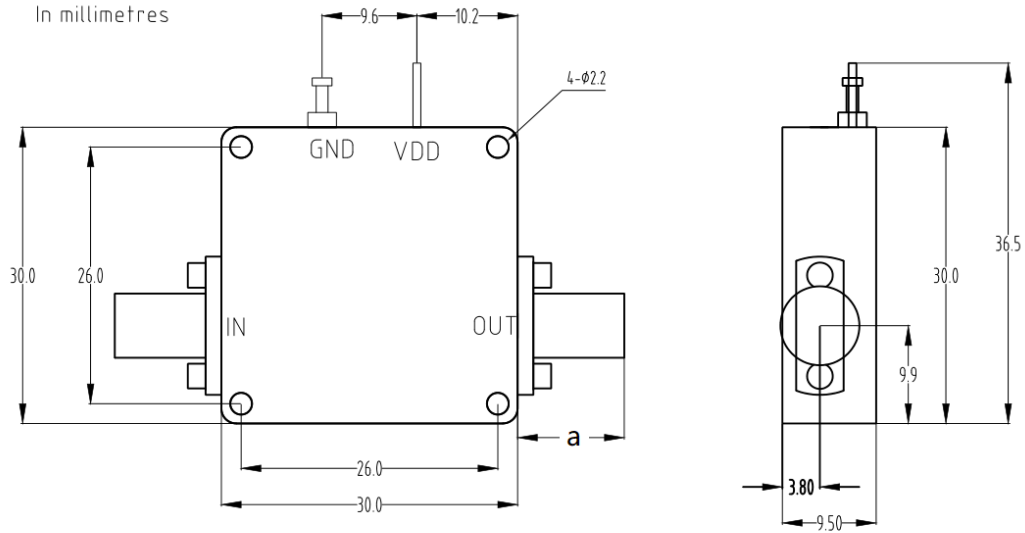
- ✓ Datasheet may be changed according to update of MMIC, Raw materials , process, and so on.
- ✓ This data is only for reference, not for guaranteed specifications.
- ✓ Please contact AT Microwave team to make sure you have the most current data.
- ✓ Always pay attention to the temperature of the case, heatsink and fan are required if case temperature exceeds over 50C.

Part Number Selection Guide

Item	Description
PN	Stand Module with DC Power Supply
PN-LCBT	L ow Cost, C ompact B ench- T op, +220V Supply with AC/DC Adapter



Dimension: (Unit:mm)



	<26.5GHz	<40GHz	<50GHz	<67GHz
Connector	SMA	2.92mm	2.4mm	1.85mm
Lenth of a	9.4mm	9.5mm	10.8mm	11.3mm

Note: Female Default. Contact with us for other types.

Heat Sink Required If Case Temp Higher Than 50C

